

arts in the peak

newsletter 15 December 2007

This newsletter carries opportunities, events and training listings. Please send any information you would like to be included to:

Arts in the Peak
The Flat
Town Hall
Bath Street
Bakewell
DE45 1BX
Tel: 01629 810122
email: artsinthepeak@msn.com.

Arts in the Peak NEWS

1. Poet Laureate of the Peak

Poetic about the Peak? Show your verse-ability.

Peak poets are being invited to celebrate the dramatic landscape of the Peak District.

The first Poet Laureate of the Peak, Alec Rapkin, has completed two years as the Poet Laureate, writing 25 poems during his tenure. Now we are looking for his successor, and the competition is being launched to find a poet who can express the unique spirit of the National Park, and what it means to live, work or visit there.

Organised by Arts in the Peak and supported by the Peak District National Park Authority, the competition aims to find a local writer who inspires a deeper appreciation of the landscape, its moods, influence and heritage.

David Gilbert, of Arts in the Peak, said: "The judges will be looking for someone with a distinctive poetic voice and an aesthetic vision of the Peak District. The first laureate has been a great success, producing powerful and evocative work during the last two years, which has been published on the Arts in the Peak and Peak Park websites. We hope we can find another inspirational writer to fill this honorary and prestigious role, reflecting both this remarkable landscape and the best of the area's artistic endeavour."

The closing date is **18 January 2008**, and the judges are local poet and heritage

arts in the peak

promoting art and artists in the peak

company no: 5455876

www.artsinthepeak.co.uk

arts in the peak

newsletter 15 December 2007

architect John Sewell, author and professor of English Literature Neil Roberts, and Derbyshire Literature Officer Ali Batteridge. The post will be for two years.

Entrants must be 18 or over on the closing date, and they must have lived in, worked in, or regularly visited the Peak District over the past three years. Their entries must be of three poems, written in the last two years, at least two of which should be inspired by the Peak District.

Poems may be handwritten, typed or on tape, but name, address, phone number and eligibility details must be on a separate sheet. Leaflets giving full details should be available from local libraries or tourist information centres.

The address for entries is Poet Laureate of the Peak Competition, Arts in the Peak, The Flat, Town Hall, Bath Street, Bakewell, Derbyshire, DE45 1BX.

Further information is available on the Arts in the Peak website <http://www.artsinthepeak.co.uk> - by calling 01629 810122 or e-mail <mailto:artsinthepeak@msn.com>.

This is one of two current poetry initiatives in the area: Derbyshire County Council also has a Derbyshire Poet Laureate, River Wolton.

Visit http://www.derbyshire.gov.uk/leisure/arts_entertainment/literature_development/derbyshire_poet_laureate/ for further information.

2. View from the Top Christmas Fairs 2007

View from the Top Christmas Fairs 2007 Christmas 2007 will be an exciting time at View from the Top Gallery with two weekends and three weekdays of arts and designer made craft fairs featuring work from AiP member Sue Mulroy, among many others.

Saturday 15 (9am-5pm) and Sunday 16 December (10.30am-4pm)
Wednesday 19 December (11am-9pm)
Thursday 20 and Friday 21 December (10am-8pm)
Saturday 22 (9am-5pm) and Sunday 23 December (10.30am-4pm)

With up to 24 tables of unique designer made gifts, from millinery to ironwork to photography, paintings, baby clothes, wooden gifts, textiles and jewellery.

Entry is Free with full disabled access.

View From The Top Gallery
4th Floor Waterstones Bookstore
1-5 Bridlesmith Gate

arts in the peak
promoting art and artists in the peak
company no: 5455876
www.artsinthepeak.co.uk

arts in the peak

newsletter 15 December 2007

Nottingham

www.viewfromthetop.co.uk

3. The STUDIO⁶¹ Christmas and New Year Exhibition



Karina Goodman

What: The STUDIO⁶¹ Christmas and New Year Exhibition
Where: STUDIO⁶¹, The Coach House, Lea Nr Matlock DE4 5GJ
When: **To 20 December**

To continue its exhibition programme STUDIO⁶¹ presents a colourful and varied Winter exhibition including Design Factory member Alison Yule Textiles, Eileen Turner Wildlife, Jenny Mather, Janice Allen, Naomi Greaves and AiP member Karina Goodman. On display will be textiles, oils, acrylics, watercolours, mixed media, photography and print making.

The Craft Shop adjacent to the gallery is now bursting with unusual quality gifts for Christmas not available on the high street.

New to the Gallery is Rachel Helen Designs. As a member of The British Jewellery Association Rachel specialises in unusual one off pieces, all hallmarked with each piece being unique and highly desirable.

I hope you can find time in your busy schedule to pop in and support the Derbyshire artists, designers and makers.

4. Continuing Bunch of Fives

Arts in the Peak member Jo Bell is an organizer and performer in Bunch of Fives which continues to Tuesday 22 January 2008 at Keele University - 01782 584 169 or email j.kershaw@uso.keele.ac.uk.

Literature steps off the page and into the ring as five Cheshire writers give you a feisty session of spoken word. Verses that will make you laugh out loud, cry into your beer or

arts in the peak

promoting art and artists in the peak

company no: 5455876

www.artsinthepeak.co.uk

arts in the peak

newsletter 15 December 2007

contemplate the universe. Bunch of Fives will provoke, arouse and tickle you – for around a fiver, in a venue just up the road, usually with a bar. What more do you want?

Tickets around £5 and worth every penny.

Also coming to other venues. To be updated call 07914 721087 and leave your name, number and/or email address. Visit www.belljar.co.uk to see our Bunch of Fives page – or sign up to our mailing list on belljar@hotmail.co.uk.

OTHER NEWS

1. The Board of Derby Playhouse has announced its closure

Audiences have been asked to patiently await formal notification. If they have paid by credit card for tickets, they may be able to receive compensations from the appropriate credit card company.

TENON RECOVERY can be contacted by email at:derbyplayhouse.recovery@tenongroup.com

2. Stars in their drives

British rock stars give free music lessons to budding bedroom musicians.

Some of the biggest names in the music industry have teamed up to provide free tuition to aspiring musicians.

Arts Council England's 'Take it away' scheme and online tutorial site 'Now Play It' have joined forces to produce an exclusive DVD, featuring music lessons from KT Tunstall, Dave Rowntree from Blur, Michele Stodart from The Magic Numbers and Tim Wanstall from Athlete.

Launched today, the DVD is available to the first 10,000 people to sign up at www.nowplayit.com/takeitaway.

Dave Rowntree, drummer with Blur – whose song 'Coffee and TV' features on the DVD, said: "This free sampler gives new players the chance to learn some of their favourite songs. Instruments and music tuition can be expensive - especially for young people - so it's fantastic to be involved and help the budding rock stars of tomorrow."

arts in the peak

promoting art and artists in the peak

company no: 5455876

www.artsinthepeak.co.uk

arts in the peak

newsletter 15 December 2007

Take it away gives people the chance to apply for a loan of up to £2,000 towards buying any kind of musical instrument, and pay it back in nine monthly instalments, completely interest free. Already, £1.5m worth of new instruments have been sold since the scheme launched in the summer.

Mary-Alice Stack, Development Manager, Arts Council England said: "Almost a third of people who have used the Take it away scheme are complete beginners, so it's great to be able to create a starter pack with Now Play It and some of the biggest names in British music today. We hope that the partnership will not only help more people buy an instrument, but also give them the support and inspiration they need to take the first steps in learning to play it."

Now Play It is a unique video service that features well-known pop and rock musicians leading step-by-step video tutorials on how to play their songs. The award winning site sees a number of household names guiding aspiring musicians of all abilities through songs from 'Parklife' to 'Ziggy Stardust' and 'Can't Get You Out of My Head'.

Ant Cauchi, Founder of Now Play It said: "Now Play It has been developed to provide an instant and engaging way of learning for budding musicians. The free sampler will help thousands of people learn the songs they love with added bonus material that offers advice on everything from chord progression and musical technique to the best equipment to use."

MySpaceTV is also supporting the launch. James Fabricant, Director of Entertainment and Head of Video, MySpace Europe said: "This initiative fits right into the MySpace ethos of creativity and self-expression. By supporting this DVD, we hope we can help inspire the next MySpace star."

For more information about the Take it away scheme and to find retailers in your area, visit www.takeitaway.org.uk

For further information on Now Play It visit www.nowplayit.com

T: 0207 467 9247 / 0207 467 9211 or email BLTakeitaway@bisslancaster.com

3. Fair Treat for Festive Foodies

Treat yourself to a visit to a traditional food and drink fair, featuring a wealth of locally produced products, in the heart of the Peak District.

A Xmas Food & Drink Fair will be held at Thornbridge Hall, off the A6020 at Ashford-in-the-Water, Derbyshire, from 10am to 3pm on Sunday 16 December. Admission will be free.

arts in the peak

promoting art and artists in the peak

company no: 5455876

www.artsinthepeak.co.uk

arts in the peak

newsletter 15 December 2007

It is the second year the event - part of the University of Derby Buxton's *Food from the Peak District* initiative and organised by Thornbridge Hall in partnership with Peak District Foods - has been held, to promote local produce.

Sheila Russell, Project Leader for *Food from the Peak District*, based at the Institute of Tourism & Hospitality at the University of Derby Buxton, said: "This is a great way to buy fresh, delicious, local food in time for the Christmas break and have a relaxing day out at the same time in a beautiful location."

Around 30 retailers will be selling products including handmade chocolates, traditional puddings, rare breed meats, smoked produce, herb oils and preserves.

Thornbridge Hall micro brewery will also be selling its own range of award-winning fine ales.

There will be the chance during the day to listen to Castleton Brass Band and explore the stately home's gardens.

For more information about the Thornbridge Hall Xmas Food & Drink Fair visit www.peakdistrictfoods.co.uk or www.thornbridgehall.co.uk.

JOB OPPORTUNITIES

1. Community artists required, Cheshire

What: Artists, Sculptors and Dance Practitioners
Who: Crewe, Nantwich, Congleton and Macclesfield Borough Councils
Where: Various locations across Cheshire
When: 2008
Deadline: 25 January 2008
Fees: Total artist's fee in each location (inc materials and travel) is £4,400

Community Artists from all disciplines are required in 5 Boroughs in Cheshire to help local communities celebrate Cheshire's Year of Gardens 08.

Artists should contact individual Boroughs for project briefs. Total artist's fee in each location (inc. materials and travel) is £4,400.

Deadline for receipt of proposals is 25 January 2008

arts in the peak

promoting art and artists in the peak

company no: 5455876

www.artsinthepeak.co.uk

arts in the peak

newsletter 15 December 2007

Crewe and Nantwich would like to hear from an artist or artists who can work with community groups to create visual art and flower/plant bed designs using natural products found in and inspired by two areas of the Borough, Queens Park in Crewe and Nantwich Weir Pool. Both projects will culminate in a sharing of work at the annual Cultural Festival in August 2008. Brief available from: Jocelyn McMillan on 01270 537234 <mailto:Jocelyn.McMillan@crewe-nantwich.gov.uk>

Congleton Borough Council seek a visual artist to engage with young people from both the settled community and the Gypsy and traveller communities to create a sculptural garden using recycled and found materials. The 'garden' will be installed on a narrowboat as part of the Middlewich Floating Garden Festival.

Brief available from: Julie Walker/Simone Cobbold on 01270 529626. Email <mailto:julie.walker@congleton.gov.uk>

Macclesfield Borough Council would like to hear from a wood sculptor to work with a community group to create 'Taylor's Corner' in Knutsford, and a community artist working with willow to develop the 'Tree of Life' project at a medium secure unit.

Brief available from: Shelagh Malley, Senior Community Activities Officer on 01625 504536 or email <mailto:s.malley@macclesfield.gov.uk>

Vale Royal Borough Council would like to hear from an artist or artists who could work with community groups to create a 'Night Garden' at Anderton Nature Park, using recorded sound, music, lanterns or other forms of illumination etc. Brief available from: Assistant Arts Development Officer on 01606 867976 or Email <mailto:kwest@valeroyal.gov.uk>

Warrington Borough Council is looking for 3 artists: a Capoeira/Movement/Contemporary Dance artist to work with a group of at risk, socially marginalised young people; a Poetry/Spoken Word/Beatbox/DJ artist to work with an intergenerational Group; a Sculpture / Junk modelling / Visual artist to work with families.

Brief Available from: Gemma Weedon, Arts & Sports Development Manager on 01925 443228 email <mailto:gweedon@warrington.gov.uk>

2. Artist wanted to lead project in Nuneaton

What: Artist specializing in community engagement
Who: Nuneaton and Bedworth Borough Council in partnership with Pride in Camp Hill and Camp Hill Residents Forum
Where: Camp Hill, Nuneaton
When: January 2008

arts in the peak
promoting art and artists in the peak
company no: 5455876
www.artsinthepeak.co.uk

arts in the peak

newsletter 15 December 2007

Deadline: 2 January 2008
Fees: Project fee of £9,400 will be paid directly to the lead artist in 3 instalments, who will then be responsible for paying sub contracted artists.

Artist specialising in community engagement, is required to lead project in Camp Hill, Nuneaton.

Nuneaton and Bedworth Borough Council in Partnership with Pride in Camp Hill and Camp Hill Residents Forum has secured funding from Arts Council England to work with residents within the Camp Hill Ward of Nuneaton and Bedworth to develop a project, which will celebrate, explore and make accessible to all, the heritage and history of the area using different art forms.

The Camp Hill area is currently the focus of a major regeneration programme. Working in partnership with the local community, voluntary sector, statutory bodies, schools and businesses, you will be responsible for coordinating and managing all work during the project, and any exhibition at the end of the project.

As the lead artist you may need to recruit other artists as necessary throughout the project, to introduce other artistic stimulus to the community. You will be responsible for the management of this relationship.

The project is intended to commence in January 2008 and it is intended the project will be completed by 31st August 2008. Deadline for applications 2 January 2008 and interviews will be Monday 7 January 2008.

Details of the full brief can be obtained by calling Sarah Perry on (024) 7637 6346. Please read the brief carefully before submitting your application.

Please apply in writing with the following:

- * CV
- * Covering letter
- * Two references
- * Explanation of your practice
- * Any experience in this type of work
- * Method statement, on how you would approach this project.

To Sarah Perry, Regeneration Assistant, Nuneaton and Bedworth Borough Council
Town Hall, Coton Road, Nuneaton, CV11 5AA, or email:
<mailto:sarah.perry@nuneatonandbedworth.gov.uk>

arts in the peak

newsletter 15 December 2007

3. Creative Event Managers/Directors in the East Midlands

What: Creative Event Managers/Directors
Who: New start-up event management company
Where: Derbyshire
When: Unknown

A new start-up event management company based in Derbyshire focusing on producing innovative, artistic and unusual services to the client is searching for new partners. The ethos of the company lies behind producing creative solutions in keeping with sustainable living and environmental awareness and practise. 'Events in unusual places' strand of the work needs further development and the company also needs to generate new business.

The company is therefore looking for one or two dynamic and proactive individuals with a proven track record of planning and managing projects. The company is at a start-up stage, a very exciting time to get involved. These are freelance posts (subject to relevant income generation) with an option for the right person to become a Partner/Director in the organisation. Contact: <mailto:tiinataatila@hotmail.com> for further information.

4. Opportunity for a Creative Consultant

What: Creative Consultant
Who: Derbyshire Arts Partnership/Derbyshire and Derby City/Arts Council England – East Midlands
Where: Derby City and Derbyshire
Deadline: Applications by 11am, Friday 21st December 2007

A consultant is needed to research and propose a 5 year Creative Industries strategy and action plan for Derbyshire and Derby City.

The purpose of the study is to create a realistic yet ambitious strategy that paves the way for a step change available to support the development and growth of Creative Industries in Derbyshire and Derby City and to identify the key stakeholders committed to realise this.

This study is a partnership project between all the local authorities in Derbyshire through the Derbyshire Arts Partnership, Derby City Council and Arts Council England – East Midlands.

The desired outcomes include:

arts in the peak

newsletter 15 December 2007

The completion of a 5-year strategy for Creative Industries development and support in Derby City and Derbyshire based on research of local, regional and national policies, strategies and activities, and consultation with Creative Industries and key stakeholders in the region.

A costed 3 Year Action Plan to accompany the Strategy that contains a summary description of each Action; suggested funding opportunities; lead partner(s); other key stakeholders; KPIs (including realistic but stretching outcome targets) and; cross-references to further information.

Recommendations about appropriate partnership and governance arrangements to instigate, coordinate and monitor the implementation of the Action Plan – this should include Terms of Reference, a high-level programme (gantt chart) and suggestions about key active, appropriate and committed participants.

An Executive summary of the Strategy and Action Plan for use as an advocacy document for the Creative Industries in Derbyshire and Derby City.

Budget: £20,000

If you would like to submit a tender for this piece of work, please contact Claire Bosworth Claire.bosworth@derbyshire.gov.uk
Tel: 01773 831385 for the required documents and specification.

5. Arts Development Officer sought, Lancashire

What: Arts Development Officer
Who: Lancashire County Council
Deadline: 28 December 2007
Salary: £23,749 - £25,320 plus and essential car user allowance
Grade: SO1

Lancashire County Council is rated an 'Excellent' authority and has gained the CPA maximum score of 4 for Culture. It supports the widest range of creative activity and organisations throughout the County.

We need an experienced and imaginative Arts Development Officer who will integrate creative activities throughout a range of services and organisations and deliver real community benefit and impact. You will be confident in working with a wide range of partners and experienced in work with a range of art forms and arts organisations.

You will be a team worker with excellent all round communication skills. You will also

arts in the peak

newsletter 15 December 2007

have substantial experience of project development, working directly with arts organisations and artists and developing project and commission briefs.

For an informal discussion please contact: Elaine Roberts, Head of Arts Development on 01772 533012.

Apply online at <http://www.lancashire.gov.uk/vacancies> . Tel: 0845 053 0008 . 24 hour answer phone

Interviews will be held w/b 21 January 2008.

Ref: S00522SW

6. Creative Partner wanted, Stoke-on-Trent

What: Creative Partner
Who: SGFL
Where: Jackfield Infant School, Stoke-on-Trent
When: January 2008

As part of our Creative Partnerships programme to embed change in how we teach and learn we are looking for a creative individual to work closely with Foundation Stage at Jackfield Infant School in Stoke-on-Trent. Our ideal artist will be able to work in the classroom alongside the teaching staff in order to develop creative approaches to learning. The artist should have a wide range of arts techniques and skills and experience of working at Foundation Stage.

We are looking for someone who is able to start in January 2008 and deliver 2 days per week until Easter 2008.

For more information and a full brief please contact Jackfield Infant School tel: 01782 234450 or email <mailto:jackfield@sgfl.org.uk> - marked for the attention of Sue Humphries

7. Creative Partnerships Stoke-on-Trent

What: Creative Curriculum Case Studies
Who: Creative Partnerships Stoke-on-Trent
When: Deadline Monday 17 December 2007

Background

Creative Partnerships is an Arts Council England national programme, which gives young people in disadvantaged areas across England the opportunity to develop their

arts in the peak

newsletter 15 December 2007

creativity and ambition by building partnerships between schools and creative organisations, businesses and individuals.

As part of the Creative Partnership Stoke on Trent project school programme there is a cluster of schools aiming to develop a more 'Creative Curriculum' within their school. Each school is working towards a sustainable approach to teaching and learning using more creative pedagogy in their curriculum structure and delivery.

Contract

Three primary schools within the Creative Curriculum cluster would like to commission an individual to record a detailed case study to document the process, outcomes and impact of their respective creative partnerships in each school. They also desire this case study to closely examine how these bespoke approaches to the curriculum have enhanced and developed teaching and learning.

This piece of work will be used by each school as a record of outcomes, to inform future partnerships and support their aims to showcase their work to other schools in the area.

We are looking for a person who can:

- * Observe and interview teachers, pupils and partners at the 3 schools (all in close proximity) and then write a case study of their projects which will compare and contrast their approaches to the curriculum
 - * Be instrumental in collecting photographs, film and audio clips and other supporting documentation as supporting material to the case study. (Liase with the link teacher in each school and the Creative Agent to access photos, film etc they have captured)
 - * Work with schools and Creative Agent to review and edit the case study as necessary
 - * Reflect on the project work in each school in light of the new curriculum framework and current educational trends
- * Be able to complete this work by March 2008

Contract period: asap - March 2008

Contract days and fee: Budget for contract is £4070 including travel and other expenses. This breaks down to the following proposed schedule:

1 day initial meeting and brief on the case study £110

arts in the peak

promoting art and artists in the peak

company no: 5455876

www.artsinthepeak.co.uk

arts in the peak

newsletter 15 December 2007

1 day per school to engage with the staff / partners and the aims of the project @ £220 per day £660

Contact time: observe and capture outcomes 4 days per school @ £220 per day £2640

Collation time: to shape / write the case study

1 day per school @ £220 £660

Application process:

Applicants must:

- * Have a knowledge and understanding of Creative Partnerships and how the programmes work in schools
- * Experience of working in schools with staff and children
- * Experience and ability to write sharp and inspiring case studies that reflect the creative activity taking place in schools and the experience of staff, children and creative partners
- * Have an up to date CRB check
- * Be able to travel between schools
- * Be able to provide 2 referees

Please submit a short letter giving the following details about your:

- * Relevant experience
- * Suitability for the post
- * How you would approach the brief
- * Timetable of milestones
- * CV & 2 referees
- * An example of your previous writing for an audience of teachers and/or practitioners such as an article or case study

Please submit a copy by email to <mailto:becbell@lycos.co.uk> and a hard copy, including any attachments to:

Rachel Billington
Creative Programmer
Sutherland Institute

arts in the peak
promoting art and artists in the peak
company no: 5455876
www.artsinthepeak.co.uk

arts in the peak

newsletter 15 December 2007

Hothouse Annexe
Lightwood Road
Longton
Stoke-on-Trent
ST3 4HY
T: 01782 377440

8. Two posts at Junction Arts

What: Senior Management Positions - Two posts
Who: Junction Arts
Where: Shirebrook, North Derbyshire
When: Deadline Monday 7 January 2007 for both posts

Are you as passionate and excited about creative communities as we are? Junction Arts is a flagship participatory arts organisation based in Shirebrook, North Derbyshire.

Arts Programme Manager (Full time - 37.5 hours) £24,750

We are looking for an experienced manager with relevant skills to join a new senior management team. You will develop and manage a vibrant partnership based arts programme in a range of art forms and settings.

General Manager (30 hours) £24,750 pro rata

We are looking for an experienced manager with relevant skills to join our senior management team.

Interview dates: 16th and 17th January 2008

For further information, please contact Junction Arts on 01623 746 222
<mailto:info@junction-arts.demon.co.uk> or download the application pack at our website
<http://www.junction-arts.org.uk/job.htm>

9. PR support required in Doncaster

What: PR Support required
Who: Hothouse 08 Festival (1-22 March)
Where: Doncaster

Over the last four years the HotHouse programme has become one of the leading events in Doncaster and the South Yorkshire region. HotHouse08 features over 25 performances including stand-up comedy, theatre, music, literature, street arts and dance events and workshops. Highlights include Bellowhead, Natalie Clien, Stewart

arts in the peak

newsletter 15 December 2007

Lee, Ensemble 360 with soprano Elizabeth Watts, Empirical, Armonico Consort, Rhod Gilbert and the return of Lost Vagueness for our Festival Finale party.

HotHouse08 requires an experienced PR specialist to work alongside the Festival Director and Producer to further enhance the HotHouse profile in the region and beyond.

For a full brief please email - <mailto:janet.sisson@doncaster.gov.uk>

10. Press & Publicity Officer sought, Leicester

What: Press & Publicity Officer
Who: Leicester City Council for De Montfort Hall
Where: Based at De Montfort Hall, Leicester
When: Closing date: 19th December 2007
Salary: £18,907 - £22,845 p.a.

Temporary for 12 months

We are looking for a highly motivated and creative person to join our marketing team working on a year round programme of indoor events plus three major summer music festivals - Summer Sundae Weekender, Big Session and Leicester City Blues).

Leicester's main venue for concerts, the De Montfort Hall hosts a wide range of events including stand-up comedy, musicals and opera. The Hall is a multi-purpose arts and entertainment venue, with a particular focus on music including classical, jazz, blues, world, folk, rock and pop.

A residency undertaken at the Hall by the world famous Philharmonia Orchestra has resulted in a thriving classical audience while a broadening of the musical spectrum in terms of programming is drawing in a wider range of people than ever before.

The main auditorium also hosts big name comedy stars, children's shows and West End musicals, while an outdoor amphitheatre provides an excellent arena for summer festivals and concerts.

You will support the marketing team based at De Montfort Hall and will have:

- Substantial experience of publicity and/or promotional work
- Substantial knowledge of arts and entertainment press and media
- A sound understanding of issues affecting the provision of live performance services and the importance of marketing these services
- Educated to degree level or equivalent experience
- Good computer literacy skills
- Experience of working in a customer-focused environment

arts in the peak

promoting art and artists in the peak

company no: 5455876

www.artsinthepeak.co.uk

arts in the peak

newsletter 15 December 2007

Interviews to be held w/c 7 January 2008

For more info visit: <http://secure.leicester.gov.uk/jobdetails.asp?jobid9149>

11. Freelance sought for participatory arts activities, Salford

What: Freelance artist
Who: New Deal for Communities in Salford and Refugee Action

New Deal for Communities in Salford and Refugee Action are looking for artists to tender for a programme of participatory arts activities for families in February, Easter and May 2008 half terms (approx. 2 days/half terms).

For more information, please telephone Karina Daniels on 0161 607 8545 or email <mailto:karina.daniels@salford.gov.uk>.

12. Greenbelt Festival vacancies

What: Administrator, Box Office Manager, Commercial Manager, Head of Content
Who: Greenbelt Festivals

Greenbelt Festivals is currently advertising 4 vacancies:

Administrator
Box Office Manager
Commercial Manager
Head of Content

To find out more about these roles and to apply please visit: <http://www.greenbelt.org.uk>

13. Evaluation Consultant required, Lincolnshire

What: Evaluation Consultant
Who: Lincolnshire Youth Arts Network
When: Deadline 18 January 2008

The Lincolnshire Arts Forum seeks a freelance consultant to undertake an evaluation of the Lincolnshire Youth Arts Network (LYAN). The fee available for this work is £5,900.

Since 2004 the LYAN has aspired to use the arts to reach disadvantaged 13-19 year

arts in the peak

promoting art and artists in the peak

company no: 5455876

www.artsinthepeak.co.uk

arts in the peak

newsletter 15 December 2007

olds across the county. The current project will draw to a close in September 2008. We require a consultant to engage with this live project to evaluate the extent to which it has satisfied the aims agreed with its funding partners.

We welcome responses from experienced arts professionals with a proven track record in evaluating complex multi-agency projects. You must also have experience of successfully engaging with young people and their needs, including those who are not in education, employment or training.

The work must conclude by mid May 2008.

Interested? Contact <mailto:dawn.harris@west-lindsey.gov.uk> for a full brief.

14. Public Commission, Hospital Arts Project

What: Royal Aberdeen Children's Hospital Arts Project
Who: Artists or artist collaborations
Where: Aberdeen
When: **Deadline 30 January**
Fee: Rosehill House and the Lowitt Unit – £27,000.
Surgical and Medical Ward entrance – £15,000.
Contact: Artist briefs can be requested from sally.thomson@nhs.net or downloaded from www.rach-art.org.uk 01224 554528.

Artist or artist collaborations with a proven track record for public art commissions wanted to transform areas of the new children's hospital as part of Phase II of the exciting RACH Arts Project.

Our projects are aimed at artists or artist collaborations who have a strong element of public involvement within their public art practise. The artists will be expected to work closely with patients, families, staff and young people to realise the designs for the spaces.

15. Old Tower Arts call for sculptors

What: Notts area Sculptors
Who: Old Tower Arts Project with Bramcote Conservation Society
Where: Bramcote Old Tower, Notts
When: **Deadline 11 January**
Fee: £18,450 (inclusive). Design fee of £200 for 3 interviewed artists
Contact: For brief contact Clare Janes, Arts Development Manager
T: 0115 917 3745 or clare.janes@broxtowe.gov.uk

To create seats and interpretation panels that reflect the heritage of Bramcote Old

arts in the peak

promoting art and artists in the peak

company no: 5455876

www.artsinthepeak.co.uk

arts in the peak

newsletter 15 December 2007

Tower, through workshops in schools/community groups from February–November 2008.

EXHIBITION and OTHER OPPORTUNITIES

1. Futuresonic 2008 call for submissions

Futuresonic 2008 1-4 May, Manchester, Art Commission and Conference

Transform the city into a space of experimentation, make it come alive. Join one of the biggest socials of the year

Futuresonic now invites artists, thinkers and makers from around the world to submit proposals to its Art, Music, Ideas and EVNTS strands.

Commissions and awards with a value of up to £5000 are available.

The theme of Futuresonic 2008 and its Art strand is The Social: Social Networking Unplugged. It will be "unplugged" in a number of ways. Projects can look at social experiences and social interaction. Or who is excluded and left out of the loop of Web 2.0, and so "unplugged" in another way. Also there is the sense of pulling out the plug in order to take the new social spaces apart, see how they work, and put them together in new ways.

Futuresonic welcomes a wide range of art forms, and projects that respond to The Social theme. It could be projects that predict social futures, ambient performances that play with social expectations in public places, and artworks that explore virtual spaces and online social networking. It can be web based work, installation, software projects, performance and other formats.

Futuresonic Art

A commission valued at £5000 is available for a new project responding to the Social Networking Unplugged theme. Support will also be available for additional projects, and Futuresonic also invites submissions of projects that do not require funding from the festival. Futuresonic's art strand focuses on social and participatory artworks which re-imagine the city.

Deadline: 5pm 18 December 2007

Futuresonic Ideas

arts in the peak

promoting art and artists in the peak

company no: 5455876

www.artsinthepeak.co.uk

arts in the peak

newsletter 15 December 2007

Submissions are now invited to the internationally renowned Futuresonic conference and the Social Technologies Summit. Proposals for talks, presentations and workshops plus also session themes are invited. Submissions of innovative formats for social interaction and experimentation are encouraged. Theme - Online, Mobile and Unplugged Social Networking.

Deadline: 5pm Tuesday 18th December 2007

Futuresonic Music

Musicians are invited share their take on innovative, original and daring 21st century music with our audience. Futuresonic will be able to support a limited number of performances.

Deadline: 5pm, 7 February 2008

Futuresonic EVNT!

Futuresonic now invites any programmer, curator, promoter, label or artist group anywhere in the world to stage an independent event. Awards of £1,000 and £500 for a limited number of events. Since its introduction in 2005, EVNTS has grown to give the festival an extra edge.

Deadline: 5pm 7 February & 20 March 2008

Application forms can be downloaded at <http://www.futuresonic.com/getinvolved>

For Regular updates on Futuresonic 2008 please subscribe at: www.futuresonic.com

Futuresonic 2008

An annual festival of art, music and ideas, which is currently in its 12th year, Futuresonic occupies the orbits of both music and digital culture.

A focus in recent years has been presenting artworks in unexpected city spaces, and on social art and social technologies.

Futuresonic now invites artists, thinkers and makers to get social and present new types of collaborative social experience at Futuresonic 2008.

www.futuresonic.com

Futuresonic is supported by Arts Council England North West and presented in association with Imagination at Lancaster.

arts in the peak

promoting art and artists in the peak

company no: 5455876

www.artsinthepeak.co.uk

arts in the peak

newsletter 15 December 2007

2. Derby Museums and Art Gallery – Creative Arts Register

Derby Museums and Art Gallery are developing a community exhibition space which will have its launch at the beginning of 2008. This is a new development in their community education programme. It will showcase projects which are being run by the museum, but will also offer exhibitions to other community projects. In addition, there may be opportunities to schedule short exhibitions of work by local artists which have a particular relevance to the temporary exhibitions or permanent collections.

Derby Museums and Art Gallery are compiling a register of artists, designers, writers, makers and community groups who may be interested in exhibiting work. They also sometimes have freelance work available and hope to use the register as a way of sourcing artists to work with them on projects.

For more details, contact Jane Hardstaff, Community Learning Officer, Derby Museums and Art Gallery, The Strand, Derby, DE1 1BS, email Jane.hardstaff@derby.gov.uk or telephone 01332 716659.

3. Bollywood exhibition opportunity in Stafford

Where: Shire Hall Gallery, Stafford

When: 19 July - 7 September 2008

Who: Visual Artists and Contemporary designer-makers.

What: Staffordshire Arts and Museum Service would like to hear from visual artists in all media whose work is inspired by 'Bollywood' also contemporary craft makers inspired by pattern, colour or the cultural influences of South Asia. Suitable work will be selected for inclusion in a group exhibition at the Shire Hall Gallery.

To apply: Post or email up to 8 images, cv and artist statement to:

Kim Gould, Gallery & Exhibitions Development Officer, Shire Hall Gallery, Market Square Stafford, Staffordshire, ST16 2LD.

T: 01785 278345

<mailto:kim.gould@staffordshire.gov.uk>

<http://www.staffordshire.gov.uk/sams>

Deadline for submissions: Friday 15 February 2008

Please send and SAE if you want your images to be returned.

4. Derbyshire Open Arts 2008

arts in the peak

promoting art and artists in the peak

company no: 5455876

www.artsinthepeak.co.uk

arts in the peak

newsletter 15 December 2007

Derbyshire Open Arts is a visual arts and crafts event across the county. This free event invites you to visit artists and craftspeople in their showspaces and workplaces over Spring Bank holiday weekend.

Our next event will take place during Spring Bank holiday weekend, **24, 25 and 26 May 2008**.

Applications are now being accepted for 2008. Deadline for completion and return of forms is **Friday 11 January 2008**. Forms can be downloaded at www.derbyshireopenarts.co.uk, completed and returned BY POST to the organiser at: 11 The Clough, Lower Hady, Chesterfield, S41 0BZ.

Benefits for artists

Open studio type events benefit artists professionally as well as economically. Our evaluation shows that participating artists made a total of £36,000 worth in sales and commissions, which means an average of £300 per artist. The event offers opportunities to network with others, meet the public face to face, show work, create new work: they also open up avenues in teaching, workshop opportunities and other spin-offs. These continue after the event as the brochure gets used as a year-round reference guide.

Please note that forms are sent out automatically by post this autumn to all artists who are on our 2008 database. If you are not registered for a form, but would like to receive one by post, please contact the Organiser on 01246 230925. For any other general enquiries please email: info@derbyshireopenarts.co.uk.

5. Free CPD opportunity for heritage professionals in northern England

Are you.

- * a heritage professional working in NW, NE or Yorkshire and Humber?
- * at management or board level, or an experienced freelancer?
- * free for four days in February (see dates below)?

Then read on.

MESH is a unique professional development opportunity for cultural and heritage* professionals from across the north of England.

Find out about MESH.

What? An exciting and active learning process exploring new approaches to work-based

arts in the peak

promoting art and artists in the peak

company no: 5455876

www.artsinthepeak.co.uk

arts in the peak

newsletter 15 December 2007

problem-solving and learning. Each participant will be encouraged to explore an issue or obstacle related to their work/ organisation, including receiving feedback from an expert panel.

When? 12/13 and 26/27 February 2008 (you must be able to commit to all four days)

Where? Sandbox, University of Central Lancashire, Preston. Sandbox is an innovative and stimulating environment that provides the backdrop to a range of techniques and toolkits that provide real solutions to real problems. See <http://www.uclan.ac.uk/sandbox>

For whom? 20 cultural and heritage professionals from organisations across the north of England (NW, NE and Yorkshire and Humber). Ideally, these people will be at a level to effect organisational change (curator, director, board member/ trustee, experienced freelancer). The programme allows for up to two people per organisation.

Why? The project is seeking to develop of professional training, research and knowledge transfer in the creative and cultural industries. It is a Northern Edge project, funded by Northern Way, and developed by Sandbox and the University of Hull.

What will actually happen as part of the process?

Participants will be guided through a series of workshops and sessions to explore their issue and develop possible solutions.

The benefits of this exciting opportunity include:

- * Participating in an intensive creative workshop with peers and expert mentors
- * Extending your professional network
- * Learning new tools to effect change
- * Developing an innovative solution to an existing problem or issue

How many people will be at the lab?

A maximum of 20 people - there are very limited places due to the nature of the programme.

How much does it cost?

Nothing, it's free. You just need to commit the time, we provide everything else, including accommodation, meals and materials (except your travel to Preston).

For those who would not otherwise be able to attend for financial reasons (such as freelancers), or those with exceptional circumstances/ costs, there is the possibility of a bursary/ subsidy - please contact us for more information.

arts in the peak

promoting art and artists in the peak

company no: 5455876

www.artsinthepeak.co.uk

arts in the peak

newsletter 15 December 2007

When and where will MESH take place? MESH will be hosted in Preston at Sandbox on 12/13 and 26/27 February 2008. Overnight accommodation will be provided.

Find out even more.

Want to register your interest? Got a question? Not sure if this for you? Contact Laura Drane, 0161 273 1171 or <mailto:mesh@laurahdrane.com>

MESH is supported by Northern Edge, Sandbox and the University of Hull.
<http://www.uclan.ac.uk/sandbox>

<http://www.northerndedgecpe.org.uk/>

* Definition of heritage = museums, archives, galleries, rural and maritime natural features (and their interpretation), historic built environment, language(s), folklore and cultural expression. It intersects with the other creative industry sectors in various ways, such as history of fashion, art and design, the heritage of film, and digital visualisation of the past.

6. Design-Nation sixth selection of designers – call for entries

Design-Nation, the organisation which promotes the excellence of British design through its website www.designnation.co.uk, catalogue and exhibitions, is now calling for applications for an enlarged designer membership.

Applications will be assessed by an experienced panel of industry professionals chaired by Peta Levi, MBE, Director of Design-Nation. In line with the organisation's twin aims of promoting design excellence and sound business practice, the judges will be looking for a fresh intake of talent to add to the online resource currently consisting of work by 183 designers.

The resource, reflecting the remarkable range of skills available in the UK, is indispensable for anyone who is looking to buy, source or commission good design. Both the catalogue and the website have been translated by the BERR (formerly DTI) into German, French, Italian and Spanish. The catalogue introduction has been translated into Chinese.

Design-Nation's objective: Design-Nation's designer resource comprises some of the most talented designers currently working in the UK in the five categories: ceramics & glass; furniture; interior/exterior design & products silver, gold, metalwork & jewellery; and textiles & fashion accessories.

arts in the peak

promoting art and artists in the peak

company no: 5455876

www.artsinthepeak.co.uk

arts in the peak

newsletter 15 December 2007

The objective is to expand the resource steadily, with each successive selection bringing in fresh talent from up-and-coming designers.

Call for entries: Design-Nation (part of London Metropolitan University) promotes the excellence of British design through its membership of 183 designers. Each year it seeks out a fresh intake of talent to add to the resource of designers working in 5 disciplines (ceramics & glass; furniture; interior/exterior design & products; silver, gold, jewellery & metalwork; and textiles & fashion accessories).

Design-Nation has issued a call for entries for designers wishing to be considered at the 2008 Selection. Full details including entry requirements are available at www.thedesigntrust.co.uk/selection.htm where application forms can be downloaded.

If selected, applicants agree to pay an annual subscription of £120 + VAT.

Deadline for entries: 5pm, Monday 21st January 2008.

Enquiries to selection2008@designnation.co.uk

For more information contact: Rachel Moses, Marketing Manager, 020 7320 2895, rachelmoses@designnation.co.uk

Design-Nation is part of London Metropolitan University.
41 Commercial Road London E1 1LA
T +44 (0) 20 7320 2895 F +44 (0) 20 7320 2889 E info@designnation.co.uk
www.designnation.co.uk www.thedesigntrust.co.uk www.eurekacollection.co.uk

7. Creative Event Leaders wanted in East Midlands

What: Creative Event Leaders
Who: Workshop Network
Where: East Midlands

We are looking to represent creative participatory event and workshop leaders from all mediums of expressive, performance and urban art.

Artists build a profile that is then added to our website with their workshop summary and previous event experience; there is also space for images of you or your work. Think of it like a mini my space for freelance creative arts tutors. You can edit, update and add to your profile at will. This is your chance to let people know about the challenging and stimulating opportunities that lie within your events for their participants.

<http://www.workshopnetwork.co.uk>

arts in the peak
promoting art and artists in the peak
company no: 5455876
www.artsinthepeak.co.uk

arts in the peak

newsletter 15 December 2007

We then advertise your events and workshops nationally and regionally; we set each event a dedicated co-ordinator who takes care of all the arrangements, administration and finer details for each booking, leaving you free to lead more creative events and workshops.

We do NOT take a commission from your earnings as our artists get their whole workshop fee. We do add an administrative charge to your event or workshop fees for our service.

We are pro-active in finding assignments for our event leaders.

We have limited spaces available. Each event leader is selected for their individual merit and depth of experience, not all registrations will be selected to join Workshop Network.

Want to know more? Please go to our homepage: <http://www.workshopnetwork.co.uk/>

All appointments are subject to an Enhanced CRB check at the point of registration, there is a registration fee which covers CRB check, administration and advertising costs. Workshop Network was created with the help of The Princes Trust.

8. Rules and Regs 2008 Programme of Live Art events

Rules and Regs is pleased to present six development programmes for artists working in Live Art. Taking place throughout 2008 and across England, each programme is a unique month-long opportunity for artists to explore their practice through making new work in close engagement with a curator.

www.rulesandregs.org

2008 DEVELOPMENT PROGRAMMES:

Each programme is co-produced and curated by a different organisation.

- * The Nuffield Theatre, Lancaster: April
CALL FOR APPLICATIONS NOW OPEN:
<http://www.nuffieldtheatre.com/projects/default.asp>
- * Colchester Arts Centre: April
- * The arts organisation A Space, Southampton: May
- * **Site Gallery, Sheffield: August**

arts in the peak

newsletter 15 December 2007

- * South Hill Park Arts Centre, Bracknell: August
- * The Bluecoat, Liverpool: mid-September to mid-October

Full details for each programme will be announced soon ...

In each programme, 3-6 artists will make new work in response to a set of Rules devised by the curator. These Rules are made in response to the practices and past work of the participating artists in an effort to aid them in exploring new ways of working. The artists in each programme work in response to the same Rules, and each programme culminates in a public showing of the work created. During each programme, participating artists have access to individually-designed professional development schemes, documentation of their work and a package of production support.

Interested artists apply directly to the organisation curating each programme. Calls for applicants will be made individually by each organisation and will feature details about the structure of the programme, artists' fees and timetables.

Artists do not apply with a specific project in mind, as the Rules are made in response to participating artists, they are not revealed until the development programme begins... AFTER artists have been selected and agreed to participate.

2008 TOURING PROGRAMME:

In addition to the public exhibition of work at the end of each development programme, Rules and Regs will present three Live Art events in 2008:

Artists participating in the development programme curated by Colchester Arts Centre will present their work in July at:

- The Big Day Out, presented by South Hill Park Arts Centre in Bracknell.
- Artvaults, presented by the arts organisation a space in Southampton.

R&R's 2008 programme will culminate in an evening of performance at the Bluecoat in Liverpool in November. This "finale" - curated by Richard Kingdom and part of the Bluecoat's Liverpool Live programme - will feature artists from all six of the Rules and Regs 2008 development programmes.

ADDITIONAL INFORMATION AND LAUNCH:

More information about the Rules and Regs 2008 programme will be available soon, including details of the 2008 Launch event. Featuring speakers, networking opportunities and performances from past R&R artists, this event will be held in early 2008.

arts in the peak

promoting art and artists in the peak

company no: 5455876

www.artsinthepeak.co.uk

FUNDING OPPORTUNITIES

1. Funding for film projects involving young people

First Light Movies, which is supported through the Lottery and was set up to provide funding for film projects undertaken by young people, has announced that it is now seeking application through its "First Light Movies Studio Award". Through this award, First Light Movies is seeking to support the production of between two and four films your organisation can receive funding to make between two and four short films of up to 10 minutes in length where young people aged between 5 and 19 take a lead role in all aspects of the production process.

To be eligible to apply for an award, an organisation must be experienced in collaborative filmmaking with young people. Previous projects supported have included a school from Exeter that produced a short animated horror film about a murderous ghostly teacher. A group in Dorset produced a drama that examined how DNA affects your identity and young people from rural Wales received an award to produce a documentary about the increasingly rare Welsh mountain pony. The maximum grant available is £25,000 and the deadline is Tuesday 15 January 2008.

<http://www.firstlightmovies.com/funding/>

2. Launch of the Legacy Trust

A new £40 million fund that will use the 2012 Olympic and Paralympic Games to promote the arts and sport to young people and communities was launched on Tuesday (20 November 2007). Legacy Trust UK will support cultural, artistic, educational and sporting activities all over the country. Recently appointed board chair Dugald Mackie launched the fund at the City of London, alongside Olympics Minister Tessa Jowell and Culture Secretary James Purnell.

Legacy Trust has been established to help to ensure a celebration of the London 2012 Olympic Games and Paralympic Games across the United Kingdom and to help create a lasting legacy. The Trust will use £40 million funding endowed by the Department for Culture, Media and Sport (£6 million), Arts Council England (£5 million), the Big Lottery Fund (£5 million), and the Millennium Commission (£24 million - since been transferred to the Big Lottery Fund) to deliver a programme of cultural and sporting activities at local, regional and national level. The Trust will form partnerships with organisations that will deliver the supported programmes.

arts in the peak

newsletter 15 December 2007

The Trust plans to support a small number of national programmes, including the UK School Games, the Big Arts Week (working title) and the World Festival of Youth Culture (working title). The remainder of the endowment will be distributed throughout the three nations (Scotland, Wales and Northern Ireland) and nine English regions. In doing so, it will work closely with the London Organising Committee for the Olympic Games and Paralympic Games (LOCOG). For more information, visit: www.london-2012.co.uk

3. Comic Relief announces next application deadline (UK)

Comic Relief which operates a number of grant schemes through its Red Nose Days funding programme has announced that the next application deadline for grants over £5,000 is the 29th February 2008. Grants are available through six programme areas. These are; Young people; Older People; Mental Health; Refugees & Asylum Seekers; Domestic Violence; and Disadvantaged Communities.

The grants programme is open to registered charities and constituted community and voluntary groups and grants are made for between one and three years. Although there is no maximum grant size Comic Relief are likely to make grants of between £15,000 and £40,000 per year. For more information, visit: <http://www.comicrelief.com/apply-for-a-grant/uk/>

4. QEST Crafts Awards

Do you need funding for further crafts study or training?

QEST gives awards worth between £2,000 and £15,000 to craftsmen and women of all ages.

Scholarships are awarded twice a year – applications for spring 2008 awards must be received by **11 January 2008**.

To find out more and download an application form visit the QEST website: www.quest.org.uk or contact The Secretary, the Queen Elizabeth Scholarship Trust, No. 1 Buckingham Place, London SW1E 6HR (send and A4 sae with 50p stamp).

5. Connecting Communities Plus, Community Grants

The £18m Connecting Communities Plus (CC+) scheme is an integral part of the Government's stated aim 'to reduce race inequalities and tackle extremism'. The grant funding is for organisations that are committed to delivering projects and services that promote race equality and foster strong community relations.

arts in the peak

promoting art and artists in the peak

company no: 5455876

www.artsinthepeak.co.uk

arts in the peak

newsletter 15 December 2007

The third round of this fund opened for applications on 4th September 2007 and will close on 8th January 2008.

Applicants will need to submit proposals that demonstrate successful delivery of key priorities for the fund:

- * Improving the experiences of people from Black and Minority Ethnic (BME) backgrounds in relation to access and outcomes from public services - education, employment, health, housing and the Criminal justice System
- * Increasing the confidence of people from BME backgrounds that public services are delivered in a fair and equitable way
- * Tackling racism and extremism
- * Bringing together communities from different races and faiths, and promoting a shared sense of belonging (community cohesion)

Funding is available for a range of different activities or projects that will make a difference in your local community and contribute to the four priorities of the fund ('Improving Opportunity, Strengthening Society' provides the context and policies that form the basis of this fund, you can download it at www.communities.gov.uk/index.asp?id=1504860)

Activities that are eligible include:

- * Education – eg. Identifying and promoting positive role models for young people
- * Employment – eg. Running a mentoring scheme for local people linked to local businesses
- * Health – eg. Working with people in local communities to run activities that increase understanding of health related issues
- * Housing – eg. Supporting zero tolerance campaigns with tenants/residents against racial harassment amongst neighbours
- * Criminal Justice System – eg. Supporting members of BME communities to become involved in public services as staff members, board members or volunteers
- * Increasing the confidence of people from BME backgrounds that public services are delivered in a fair and equitable way
- * Bridge-building and conflict resolution work between different members of local communities such as festivals, social events or training of local mediators

These Community Grants are aimed at locally run and managed voluntary and community organisations with an income of less than £50,000 per year, run by volunteers or with no more than one full time or two or more part time paid staff and are not currently receiving a grant or other funding from the Race Equality Unit or the Cohesion and Faiths Unit of Communities and Local Government.

arts in the peak

promoting art and artists in the peak

company no: 5455876

www.artsinthepeak.co.uk

arts in the peak

newsletter 15 December 2007

Grants up to £12,000 are available although most grants are expected to be between £6,000 and £12,000

All funding awarded in this round must be spent by 31st March 2009

The closing date for applications is **8 January 2008**.

For more information please visit:

http://www.cdf.org.uk/pooled/articles/BF_NEWSART/view.asp?Q=BF_NEWSART_293306

6. Lisa Ullmann Travel Scholarship Fund

Supporting individual journeys in movement and dance, LUTSF supports individuals working in all areas of movement and dance wishing to travel in order to enrich their practice and their broader lives through new experiences. Applications are welcomed from choreographers, performers, lecturers, teachers, writers, therapists, administrators and related professionals, irrespective of age, nationality and previous training. Scholarships awarded between £500 and £1,000.

The deadline for applications is 25 January for projects taking place between April 2008 and April 2009. Application forms can be obtained from the website <http://www.ullmann-trav.fsnet.co.uk>. E-mail applications are not accepted.

EVENTS & EXHIBITIONS

1. The STUDIO⁶¹ Christmas and New Year Exhibition

What: The STUDIO⁶¹ Christmas and New Year Exhibition
Where: STUDIO⁶¹, The Coach House, Lea Nr Matlock DE4 5GJ
When: **To 20 December**

To continue its exhibition programme STUDIO⁶¹ presents a colourful and varied Winter exhibition including Design Factory member Alison Yule Textiles, Eileen Turner Wildlife, Jenny Mather, Janice Allen, Naomi Greaves and AiP member Karina Goodman. On display will be textiles, oils, acrylics, watercolours, mixed media, photography and print making.

On display are Oils, Mixed Media, Printmaking, Photography, Watercolours, Weaving and Illuminated Art.

arts in the peak

promoting art and artists in the peak

company no: 5455876

www.artsinthepeak.co.uk

arts in the peak

newsletter 15 December 2007

The Craft Shop adjacent to the gallery is now bursting with unusual quality gifts for Christmas, not available on the high street.

New to the Gallery is Rachel Helen Designs. As a member of The British Jewellery Association Rachel specialises in unusual one off pieces, all hallmarked with each piece being unique and highly desirable .

I hope you can find time in your busy schedule to pop in and support the Derbyshire artists, designers and makers.

2. December Folk Trains and Guided Walks in the Hope Valley and High Peak

Folk Trains

Manchester to Hathersage Folk Trains:

These trains depart Manchester Piccadilly at 1146 calling at Reddish North, Brinnington, Bredbury, Romiley, Marple, Strines, New Mills Central, Chinley, Edale, Hope and Bamford. The band then plays at the Little John Hotel, Hathersage, food is available. Return on the 1432 train from Hathersage calling at all the same stops except Strines, arriving at Manchester, Piccadilly at 1531

Sheffield Edale Rambler Folk Trains:

*These trains depart Sheffield at 1914 calling at Dore, Grindleford, Hathersage, Bamford, and Hope en route. The band then plays at the Rambler Inn, Edale. Return on the 2128 train from Edale, calling at the same stops arriving in Sheffield at 2203

Manchester to Glossop Folk Trains:

*These trains depart Manchester Piccadilly at 1849 calling at Ashburys, Gorton, Guide Bridge, Flowery Field, Newton for Hyde, Godley, Hattersley, Broadbottom and Dinting en route. The band then plays at the Glossop Labour Club, Glossop. Return on the 2139 train from Glossop calling at all the same stops, arriving at Piccadilly at 2212

Manchester to Whaley Bridge Folk Train:

*These trains depart Manchester Piccadilly at 1137 calling at Stockport, Davenport, Woodsmoor, Hazle Grove, Middlewood, Disley, New Mills Newtown, Furness Vale en route. The band then plays at The Goyt Pub, Whaley Bridge. Return on the 1443 train from Whaley Bridge calling at all the same stops except Middlewood, arriving at Piccadilly at 1527

Saturday 15 December Manchester to Whaley Bridge with Highly Strung. American 'Olde Timey' Carter Family and Appalachian music

arts in the peak

promoting art and artists in the peak

company no: 5455876

www.artsinthepeak.co.uk

arts in the peak

newsletter 15 December 2007

Tuesday 18 December with Sheffield to Edale Folk Train The Sheffield Folk Chorale. Some complaints that there were no carols last December so we should adjust the balance this time! We've had fantastic evenings every time the Folk Chorale has appeared.

Thursday 20 December Manchester to Glossop Folk Train Eunice Bobcats. Great music, known as the 'Kings of the Cajun Railroad'

Guided Walks

H.V Saturday 15 December: Hathersage Circular "Millstone Circuit" 6 miles easy

Start:1000 Hathersage Station Trains: 0846 from Manchester 0914 from Sheffield Route: Mitchell Field, Hathersage Moor, Carl Wark, Burbage Bridge, Owler Tor, Millstone Edge, Whim Plantation, Millstone Inn, Leadmill Bridge, Hathersage Station. (Can be boggy (gaiters advisable), initial climb short but steepish)). Ascent 250m Return trains: 1432 to Manchester 1442 to Sheffield Leader: Sue Beardon

H.V/G Saturday 29 December: Hayfield Circular "Postboxes on Kinder" 10 mile strenuous

Start:1015 Hayfield Bus Station Trains: *Hope Valley line:* 0846 from Manchester 0814 from Sheffield 0930 bus 61 from New Mills *Glossop line:* 0849 from Manchester bus 61 1000 from Glossop Route: 20 Trees, Cabin, Kinder Reservoir, Peter Nook Wood, Mermaids Pool, Kinder Downfall, Kinder Gates, Kinder Plateau, Redbrook, Kinder Low, Swines Back, Edale Cross, Coldwell Clough, Stones House, Hayfield Bus Station. There are 4 post boxes on Kinder Scout. This walk will visit each one in turn, where walk participants can sign the book and use the unique stamp. This is a strenuous walk with steep climbs and walking over rough terrain. Suitable for experienced walkers only! Ascent 700m. Return: To Glossop bus 61 1641 train 1706 to Manchester. To New Mills Central bus 358 1629 trains 1701 to Manchester 1712 to Sheffield Leader: Bob Findlow

For further information contact Sheila Hammersley, Hope Valley & High Peak Transport Partnership, sheila.hammersley@hvhptp.org.uk, Telephone / fax 01663 746377

**Please Note: New train timetable from 9th December. Check train times*

3. Christmas at the Hub

What: Christmas Craft Market and Christmas Ice Rink
Where: The Hub, National Centre for Craft & Design, Sleaford
When: Sunday 16 December, 11am-4pm

A wonderful winterland of Christmas Crafts to be seen!

arts in the peak

promoting art and artists in the peak

company no: 5455876

www.artsinthepeak.co.uk

arts in the peak

newsletter 15 December 2007

From hand-thrown stoneware, ceramics, glass and jewellery through to embroidered products, handmade soaps and even handbags – there will be something for everyone!

Entertainment throughout the day including traditional brass band playing Christmas Carols and Heckington Players performing a part of their Pantomime - Robin Hood!

Hot food available throughout the day!

Why not make a day of it and visit the Hub's exhibitions? The Christmas Lights exhibition includes grand chandeliers to decorative table lights. The exhibition has an array of beautiful and clever lighting solutions by some of the UK's most interesting designers. With Christmas in mind, many of the exhibits will be for sale. In the main gallery, The Pot, The Vessel, The Object, has a variety of beautiful ceramic pieces - all of which are one off pieces of contemporary pottery. Spend time wondering through the displays – many of which are also for sale!

Christmas Ice Rink - Join in the festive fun with a skate around our synthetic ice rink – available for just one day! Suitable for all ages, so why not skate away those winter chills at the Hub Christmas Craft Market?

Free parking available at Eastgate car park.

Leisure in the Community Ltd and Leisure Connection Ltd working in partnership to develop and deliver high quality leisure services in North Kesteven District.

To find out more please call the Hub on 01529 308710 or email hub@leisureconnection.co.uk, www.thehubcentre.org

4. Flying Donkeys Tour – from the Heart of England

What: An evening of Derbyshire tales with Flying Donkeys
Where: Partington Theatre Club Room
Henry Street
Glossop
SK13 8BW
When: **Sunday 24 February 2008**, 7.30pm
Cost: Tickets £5.00 – Bar: coffee & cakes on sale
Booking: 01457 853413
help@georgestreetbooks.co.uk

Three professional storytellers are out and about in Derbyshire telling time-smoothed tales of quests and curses, mysteries and misbegettings, low cunning and dark enchantment; they conjure back to life folk tales and legends drawn from Derbyshire and

arts in the peak

newsletter 15 December 2007

the Midlands, and worked with some modern twists and turns. Flying Donkeys of Derby are travelling the county with their new and innovative show, bringing stories from the heart, and stories for the heart of England. Roy Dyson, Helen Frances & Raymond Greenoaken, with guests drawn from Flying Donkeys' associates. Supported by the Arts Council, East Midlands.

Evening promoted by George Street Books, George Street, Glossop

For more details about the tour see www.flyingdonkeys.co.uk or call 01773 781007

5. Dance and Literacy Workshops for Primary and Infants

Andy Martin is an experienced performer who sings songs going back hundreds of years and teaches traditional dances that have been passed down from the Tudor era. Andy's unique touch is that the song-story (ballad) is illustrated as he tells it, thus compelling attention.

Andy now has slots for dance and literary workshops for primary and infants. Workshops are flexible and can be combined or changed to suit individual requirements.

Please call for details and available dates.

Tel: Andy Martin on 01773 748996 or Mob: 07947 894 276

Email: andybox@hotmail.co.uk

6. Sheffield shows

Cupola

To 12 January: 'Christmas Exhibition' – mixed show

178-178a Middlewood Road,

Hillsborough

Sheffield S6 1TD

T: 0114 285 2665

www.cupolagallery.com

Graves Art Gallery

Until Spring 08: 'Breaking with Tradition' – the development of modern art in Britain.

Until 5 January: 'Where Are We?' – questions of landscape.

arts in the peak

promoting art and artists in the peak

company no: 5455876

www.artsinthepeak.co.uk

arts in the peak

newsletter 15 December 2007

Surrey Street
Sheffield
S1 1XZ
T: 0114 278 2600
www.sheffieldgalleries.org.uk
Mon-Sat, 10-5

Millennium Gallery

Until 20 January: 'Hand, Heart and Soul' – The Arts and Crafts Movement in Scotland.

Arundel Gate
Sheffield
S1 2PP
T: 0114 278 2645
www.sheffieldgalleries.org.uk
Mon-Sat, 10-5; Sun, 11-5

7. Manchester shows

Blyth Gallery

To 5 January 2008: 'Illuminations'

Due to the huge success of Deborah Moses summer glass exhibition at Blyth in Manchester, her stunning new fused glass 3D designs will be exhibited along with the beautiful work by artists Louise Naimian, and Brazilian painter D. Esteves

Amazon House
Brazil St
Manchester M1 3PJ
M/F 9~5.30 sat 11~3.30 closed bank holidays
www.artmanchester.com

CUBE – Centre for the Urban Built Environment

To 26 January 2008: 'Shrinking Cities'

Shrinking Cities Exhibitions coming to Manchester and Liverpool

The Shrinking Cities project is funded by the German Cultural Foundation and investigates the process of urban shrinkage. Since 2002 it has worked with an international network of more than 200 artists, architects, filmmakers, academics, and local initiatives. Its focus is primarily developments in the US, UK, Germany, Russia, and

arts in the peak

promoting art and artists in the peak

company no: 5455876

www.artsinthepeak.co.uk

arts in the peak

newsletter 15 December 2007

Japan. After several large exhibitions in Europe, North America, and Asia, Shrinking Cities is coming to the UK for the first time, presenting its international investigations with over 80 exhibition works.

CUBE is hosting the first part of the exhibition, Shrinking Cities: International Research, which examines the phenomenon of urban decline in Manchester/Liverpool, Detroit (USA), Halle/Leipzig (Germany), and Ivanovo (Russian Federation). Themes include a worldwide study of shrinking cities, the change in urban landscapes, everyday practices, and political conflicts under the conditions of urban decline.

At RENEW Rooms, Liverpool, a thematic focus is given to the subject of polarisation, examining the conditions in northern England and greater Detroit.

The second part of the exhibition, Shrinking Cities: Interventions, is being hosted by Site, Liverpool John Moores University's art gallery at the Albert Dock, Liverpool, and presents models of action. The projects range from artistic interventions and self-empowerment strategies through architectural, landscape, media, and performance interventions all the way to new legal regulations and utopian visions.

113-115 Portland Street
Manchester
M1 6DW

Castlefield Gallery

To 27 January 2008: 'Everyone Knows This Is Nowhere'

New work by Gordon Dalton and S Mark Gubb, made in response to specific locations visited on a road trip from Los Angeles to Snake River Canyon, Idaho.

2 Hewitt Street
Knott Mill
Manchester M15 4GB
T: 0161 832 8034
Wed-Sun 1-6 (please check website for Christmas opening times)
www.castlefieldgallery.co.uk

8. Stafford automata

What: 'Magical Mechanical Machines'
Where: Shire Hall Gallery, Market Square, Stafford ST16 2LD
When: Until 6 January 2008

arts in the peak

promoting art and artists in the peak
company no: 5455876
www.artsinthepeak.co.uk

arts in the peak

newsletter 15 December 2007

Featuring work of contemporary automata makers and mechanical sculptors, examining the movement and mechanics of the work. Includes a range of work, techniques, construction and materials.

Mon-Sat 9.30-5; Tues 10-5; Sun 1-4
www.staffordshire.gov.uk/sams

9. View from the Top

What: Diverse Photography Exhibition in support of Photovoice
Where: View from the Top Gallery, above Waterstones in Nottingham
When: 16 January-9 February

Calling photographers of all kinds.

View from the Top, a central gallery above Waterstones in Nottingham, is having its first photography open exhibition in support of PhotoVoice. Open to all and giving new and experienced photographers a chance to show their work to the public. We hope to present an exciting, diverse selection, highlighting the vast spectrum of the art of photography, including landscape, portrait, wildlife, architectural, abstract, sports and photo-journalism.

10% of the profits will support the work of Photovoice which runs photography projects in the UK and around the globe. PhotoVoice's mission is to bring about positive social change for marginalised communities by providing them with photographic training to enable them to advocate, express themselves and generate income. See <http://www.photovoice.org> for details.

Download information and entry details from our website <http://www.viewfromthetop.co.uk> or email <mailto:Katie@viewfromthetop.co.uk>

10. Worksoop Christmas calendar

What: 'A Natural Obsession', Kate Malone and Junko Mori
'Objects and Rituals', silver by Maria Hanson and Chris Knight
'Five Gold Rings', 25 jewellers, 125 gold rings
Where: Harley Gallery, Welbeck, Worksoop S80 3LW, Tuesday -Sunday 10am-5pm
When: Until 23 December 2007

www.harleygallery.org.uk

arts in the peak

newsletter 15 December 2007

11. The Lift Global Music Club

What: Christmas gig featuring Max Pashm and DJ Stan
Where: Glossop Town Hall, High Street West, Glossop
When: **22 December, 8.30pm-late**
Cost: £10 in advance, £12 on the door

We are delighted to welcome Max Pashm: a musician, dj, producer and sound recordist, based in Brighton, U.K.

Now with amazing live 4 piece band featuring Max's signature crossover sound mixing beats and Greek traditional instruments to a truly fabulous effect. Band members include:

Max Pashm Keyboards Vocals Beats and Percussion
Merlin Shepherd Virtuoso Clarinet and sax player
Laura Anstee Greek Lyra
George Kypreos Bouzouki / Baglamas

Using his skills as a percussionist and singer, he mixes electronic beats with vocals and world instruments, from a wide variety of different cultures and musical traditions, forming his own unique blend of world music.

Rising to fame in the mid nineties as an early pioneer of ethnic/electro dance music, he released his first album 'Weddings barmitzvahs and funerals' on sony music in 1997... a reflection of his Jewish heritage, Greek and Arab influences and love of of global rhythms.

The album was well acclaimed worldwide, along with Max's blistering live international performances and dj sets at clubs, venues and festivals.

The album enjoyed extensive radio play and both media and television coverage . Max's music went on to be a big hit in Greece, France, Switzerland, Israel, Czech and Holland. Max has remixed artists such as Robert Miles, Ekova, Simon and Garfunkel, X-Ray Specs and Headmix Collective and has worked with the likes of Nitin Sawney, The Levellers, The Bagdadies and Pavlos Papadakis and son.

Reconstructions, continues the Pashm theme of ethnic/electro fusions incorporating organic world sounds with warm funky and hypnotic grooves. Max will be featuring Cretan lyra players and other guests for much of his live work and DJ sets can range from uplifting ethnic club dance, to chill out and completely traditional world music , like Klezmer, Greek and Balkan music, as heard in much of Max's own songs and remixes.

arts in the peak

promoting art and artists in the peak

company no: 5455876

www.artsinthepeak.co.uk

arts in the peak

newsletter 15 December 2007

The Lift Global Music Club

www.liftglobal.com/Calendar/calendar.html

12. Buxton Opera House Christmas Calendar

What: The Twelve Days of Christmas
When: 15 December 7.30pm

The Fringe Season hit of 2006 is back – with a re-working and a larger cast. This superbly funny family comedy is set in 1887, and sees Elizabeth Fairfax coping with twelve drummers drumming, eleven pipers piping, and so on, as her suitor, Mr Edward Fitzwilliam's expressions of seasonal true love grow more and more extravagant as the big day approaches.

What: Snow White and the Seven Dwarves
When: 15 December 2pm and 7pm; 17 December 1pm; 18 December 1pm and 7pm; 19 December 1pm and 6.30pm; 20 December 1pm and 7pm; 21 December 2pm and 6.30pm; 22 December 2.30pm and 7pm; 23 December 2pm and 6.30pm; 24 December 2.30pm; 26 December 2pm and 6.30pm; 27 December 2.30pm and 7pm; 28 December 2pm and 6.30pm; 29 December 2.30pm and 7pm; 30 December 2pm; 31 December 2.30pm; 1 January 2008 2.30pm and 7pm.

Starring Lynne Pearson (Carol Baldwin from *Coronation Street*), Rodd Christensen (Spencer from *Balamory*) and Christina Baily (Dannii Carbone from *Hollyoaks*) Hi ho, hi ho – it's time for some Christmas magic at Buxton Opera House, where the wicked Queen Belladonna (Lynne Pearson, *Coronation Street's* Carol Baldwin) plots to kill her beautiful step daughter Snow White (played by Christina Baily, better known as Dannii Carbone from *Hollyoaks*). After a lucky escape, Snow White discovers a cottage deep in the forest where she meets seven lovable dwarfs: but will her pint-sized allies be able to protect her from the evil Belladonna?

What: Christmas with the Buxton Music Society
When: 16 December 7.30pm

With special guests, The Choir of Worcester College, Oxford. Celebrate the festive season at Buxton Opera House with a traditional carol concert from the Buxton Musical Society Chorus and Orchestra, conducted by Michael Williams, and their special guests from Worcester College. Guaranteed to get you into the festive spirit, the concert will include a selection of your favourite carols and Christmas songs and, as ever, the audience will be actively encouraged to sing along.

arts in the peak

promoting art and artists in the peak

company no: 5455876

www.artsinthepeak.co.uk

arts in the peak

newsletter 15 December 2007

What: Maddy Prior and the Carnival Band – Carols and Capers 2007
When: 17 December 7.30pm

Devotees of traditional Christmas music will be delighted to hear that Maddy Prior and the Carnival Band will be coming to Buxton once more with their unique seasonal show. Like their previous seasonal excursions, this one sees Maddy and the Carnival Band (led by Andy Watts) put their unique stamp on a range of familiar (and not so familiar) festive material, while also exploring some new and exotic directions.

What: Oh Whistle
When: 27 December 7.30pm, 28 December 7.30pm; 29 December 7.30pm

Over a century after they were first published, the ghost stories of MR James retain their power to terrify and amuse. Following his critically acclaimed one-man show *A Pleasing Terror ...* Robert Lloyd Parry brings two more of James' classic spine-chillers back to life. *Oh, Whistle, and I'll Come to You, My Lad* – a tale of nocturnal horror on the Suffolk coast – is considered by many to be author's masterpiece. It is beautifully complemented here by *The Ash Tree*, a story of witchcraft and vengeance down the generations

What: Hold Tight It's Christmas 60s Night
When: 30 December 7.30pm

Hold tight for another roller-coaster ride through the very best of 60s music – a multi-talented, multi-instrumental cast of ten fantastic singers and musicians reproducing the greatest hits of the 60s with uncanny accuracy and brilliant musicianship. From the Beatles to the Beach Boys, from Cilla Black to Aretha Franklin, from Tom Jones to Elvis Presley, and this time with a huge amount of festive fun and some great 60s Christmas hits!

What: The Nutcracker
When: 4 January 7.30pm

St Petersburg Ballet Theatre returns with this annual seasonal treat. In this magical Christmas story, Clara takes a spellbinding journey from her family home to a fantasy kingdom where she and her Nutcracker Prince fight off the evil power of the Mouse King, meet the Snow Queen and visit the Land of Sweets. The ballet contains some of his most memorable music in the Dance of the Sugar Plum Fairy and the Arabian Dance, evoking winter enchantment to make this fairy tale ballet a timeless hit for all the family.

What: Buxton Buzz Comedy Club
When: 4 January 8.30pm

The very best in stand-up comedy featuring Okse, Christian Steel, Chris Brooker. Compere: Bill Woolland.

arts in the peak

newsletter 15 December 2007

13. Drift – meet the artist in Manchester

What: Drift – meet the artist at twenty+3 projects in Manchester
Where:
When: 15 December from 12-5pm

DRIFT

Paul Donald

Donald synthesizes elements from modernist geometric abstraction, cartooning and furniture design into works of drawing, painting and sculpture. In Drift, he has exchanged his usual power tools and paint for craft knife and ink. Tiny idiosyncratic furniture-like pieces have been cut, shaped and folded by hand from small dappled primary coloured grid paintings.

Elegant and intentionally quirky these new works grow out of Donald's interest in the shifting boundaries of identity. 'I like to use humour to loosen fixity and meaning', says Donald. 'For me the loose lines of the work explore how animation in cartoons, as in everyday life, dissolve clear edges, limits or boundaries.

Donald has shown in Australia and Europe. Drift is his first UK exhibition. His work is in numerous public and private collections, and he is represented in Australia by James Dorahy Project Space, Sydney.

twenty+3 projects is a contemporary art space, run by artist Heidi Schaefer, located in the converted front room of a terraced house in Manchester. More details on <http://www.20plus3.co.uk>

Drift

The exhibition is open 12 - 5pm Saturdays or by appointment.
The gallery will be closed Saturday 22 and 29 December.

For more information and directions:

Heidi Schaefer

<mailto:h@heidischaefernet>

0790 594 4807

<http://www.20plus3.co.uk>

Training and Networking

arts in the peak

promoting art and artists in the peak

company no: 5455876

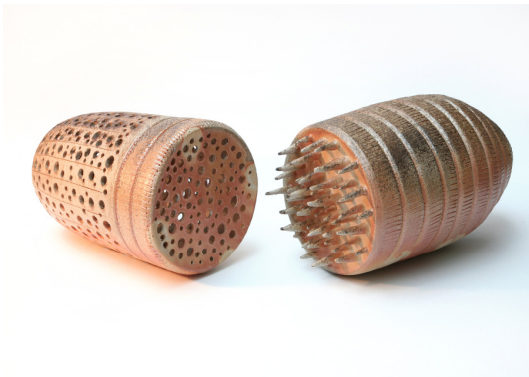
www.artsinthepeak.co.uk

arts in the peak

newsletter 15 December 2007

1. Ceramic weekends at Persistence Works – 2008 dates

What: Handbuilding
Who: Sarah Villeneau
Where: Persistence Works, Sheffield
When: 12/13 January, 9/10 February, 8/9 March 2008
Bookings: For more information or to make a booking, please contact:
Sarah Villeneau:
E: sarah@claypots.plus.com
T: 07734958310



During the workshop sessions (which will have a maximum of 4 - 5 participants) we will look at different handbuilding and sculptural techniques, using the slab and pinch pot method to explore and experiment with ideas, moving on to larger scale coiled or slabbed pieces which will be built and decorated over the two days.. We will look at form, texture and surface decoration using both natural forms and the history of ceramics for inspiration.

All courses will run from 10am – 4pm on the Saturday and 11am – 4pm on Sunday.

Fees for the two days are £125 inclusive of materials and firing of finished works. Coffee and tea will be supplied but please bring your own lunch.

arts in the peak

promoting art and artists in the peak
company no: 5455876
www.artsinthepeak.co.uk

arts in the peak

newsletter 15 December 2007

Sarah Villeneau
Freelance Visual Artist
Studio 14 Persistence Works
Yorkshire Artspace
21 Brown Street
Sheffield
S12BS

2. Progress – development programme for small or emerging arts organisations

What: Progress
Who: Cultivate East Midlands
Where: Dean Room, emda, Apex Court, City Link, Nottingham NG2 4LA
When: ***Deadline for applications 21 December 2007***
Cost: Free
Bookings: tina@cultivate-em.com, T: 0115 9352015

If you are a small or emerging not-for-profit arts company based in Derby, Derbyshire, Nottingham, Leicester, Leicestershire or Rutland that wants to PROGRESS then this is the programme for you.

Cultivate, in partnership with Creative Launchpad, Creative Leicestershire and Derbyshire Arts Development Group, is offering you the opportunity to be given in-depth advice on how you can develop, alongside a bespoke programme of capacity building activity which could include training, mentoring or consultancy or even a mix of them all.

PROGRESS is free to eligible applicants, so find out now if this is for you and how you can PROGRESS.

The first phase of the programme will close for applications on 21st December 2007 so dont delay it, contact us NOW.

www.cu.tivate-em.com

3. The Kelman Group Workshops Spring Season 2008

What: Improvisation weekends
Who: The Kelman Group
Where: Sheffield, Leeds, Manchester, Huddersfield
When: 23 & 24 February - Open Performance Centre, Sheffield
29 & 30 March - Workshop Theatre, University of Leeds

arts in the peak

promoting art and artists in the peak
company no: 5455876
www.artsinthepeak.co.uk

arts in the peak

newsletter 15 December 2007

10 & 11 May - DNA Performance Resource. Manchester
7 & 8 June - Marsden Mechanics Hall, Huddersfield

Cost: Prices for one weekend - £60 (£40 concess). A discount can be arranged if you book more than weekend. Please get in touch for details.

Bookings: You can book by:

- * visiting the website <http://www.kelmangroup.com>
- * emailing <mailto:bob@kelmangroup.com>
- * calling 01484 851227
- * or posting your contact details and a cheque (payable to 'The Kelman Group') to The Kelman Group, 12 Victoria Road, Meltham, Holmfirth HD9 5NL

Suitable for performers and non performers alike, all we ask is that you have curiosity and a sense of fun.

Using a series of exercises developed to train professional improvisers an to make new work, you will explore the physical, vocal and mindful aspects of performing, including creativity, being in the moment, ensemble, and playfulness.

The Kelman group are the only European company making performance and teaching the methods of American director and improviser Scott Kelman. We collaborate, make work and teach our methods all over the world. For more information take a look at our website <http://www.kelmangroup.com>

All courses run from 1pm-6pm on both Saturday and Sunday.

4. New Media Training Course at WFA

What: New Media Training Course
Who: WFA
Cost: Costs ex VAT: Rate B (Educational/waged) - £800 Rate C (Professional/commercial) - £1,200

New City & Guilds 7501 Unit Credits.

WFA is offering two stand alone, NVQ Level 3 C&G Units developed over years of training delivery and professional practice. Each course will run one day a week over a 10 week period with a minimum of 6 and maximum of 12 participants in groups of 3. On successful completion of a production & portfolio of documentation, participants will be awarded the appropriate C&G Unit accreditation.

323 - Animation Techniques - starts Tuesday 22 January 2008 & each Tuesday until 25 March 2008.

arts in the peak

newsletter 15 December 2007

Designed to develop knowledge and skills in the creative & technical application of animation so as to be equipped with the essential competences to develop future projects

326 'Short Film Production' starts Wednesday 23 January 2008 & each Wednesday until 26 March 2008.

Enables participants to develop the knowledge, skills & essential competences for producing shorts through a blend of theory & practical hand-on approach led by industry practitioners.

5 days Digital Video Production 14-18 January 2008, 9.30am to 5.00pm

Course gives an intensive introduction to tools & techniques from pre to post production with professional DV camcorders & Final Cut Pro software. Aims to update production practice as well as give a grounding to newcomers. Costs ex VAT: Rate A (Un-funded / unwaged) - £152, Rate B - £360, Rate C - £640.

Introductory 1 day courses, 9.30 am to 5.00pm
Costs ex VAT: Rate A - £38, Rate B - £90, Rate C - £160
Dreamweaver

18 January 2008

Introduction to creating web pages with this powerful authoring tool - setting up a site, creating web page with text, images & buttons
Photoshop

31 January 2008

Introduction to this professional graphics software - document set up, size, colour modes, resolution, palettes, toolbox and software references.

Media Education

From extensive practice in both primary & secondary schools WFA has developed a series of workshops for teachers, artists & other practitioners wanting to gain skills & learn new creative approaches to using ICT & New Media across the curriculum & other practices. Costs (ex VAT): Rate A - £45, Rate B - £90, Rate C - £160.

The following one day workshops are being offered for absolute beginners:

Working with Digital Images on 21 January 2008

Working with Digital Audio on 25 January 2008

Working with Digital Video on 28 January 2008

All details available from WFA:

arts in the peak

promoting art and artists in the peak

company no: 5455876

www.artsinthepeak.co.uk

arts in the peak

newsletter 15 December 2007

9 Lucy St,
Manchester M15 4BX
T: 0161 848 9782 / 5
F: 0161 848 9783

E: wfa@timewarp.co.uk
W: www.wfamedia.co.uk

ENDS